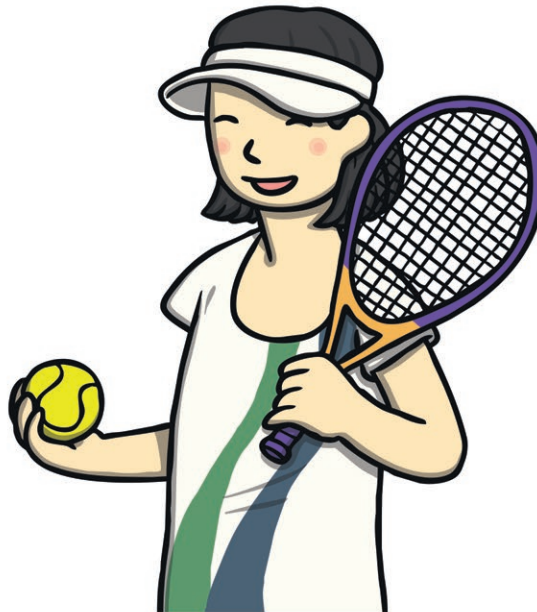


and

There are two types of **conjunction**: co-ordinating conjunctions and subordinating conjunctions. The conjunction 'and' is used in a sentence to join or link words, phrases or clauses together. It is a co-ordinating conjunction that can make a compound sentence.



Romario mowed the grass **and** his friends helped him.



I like to play tennis **and** I love to walk my dog.



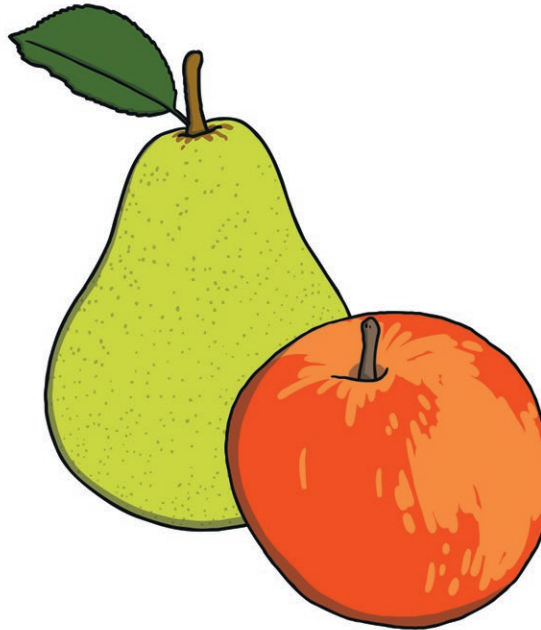
Danni will be eating doughnuts **and** she will be drinking milkshake.

but

There are two types of **conjunction**: co-ordinating conjunctions and subordinating conjunctions. The conjunction 'but' is used in a sentence to join or link words, phrases or clauses together. It is a co-ordinating conjunction that can make a compound sentence.



James needed to wear sun cream **but** he had forgotten to pack it.



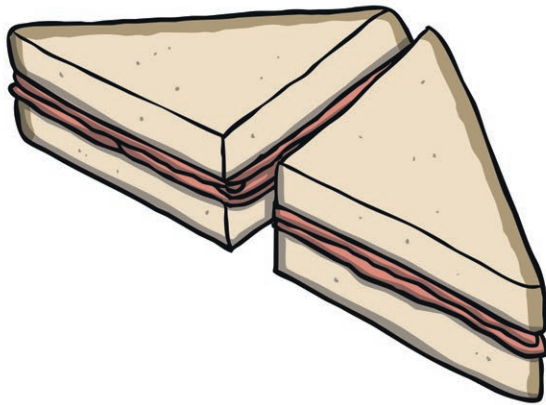
She likes apples **but** she doesn't like pears.



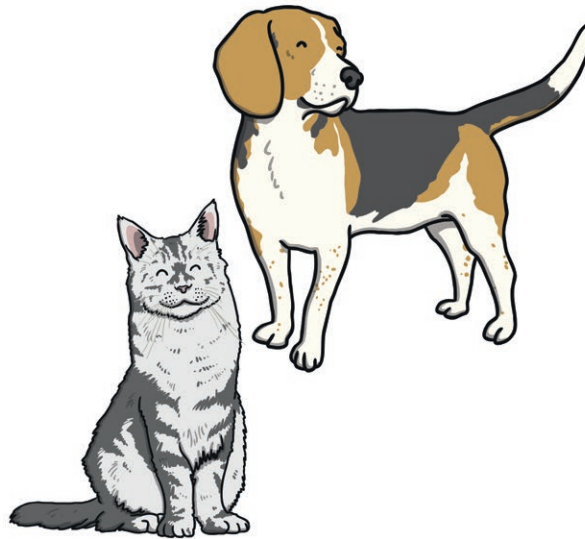
The tiger was hungry **but** he was too tired to hunt.

or

There are two types of **conjunction**: co-ordinating conjunctions and subordinating conjunctions. The conjunction 'or' is used in a sentence to join or link words, phrases or clauses together. It is a co-ordinating conjunction that can make a compound sentence.



Would you like a cheese
or would you like a
ham sandwich?



Nikita would love a pet
dog **or** she might like a
pet cat.



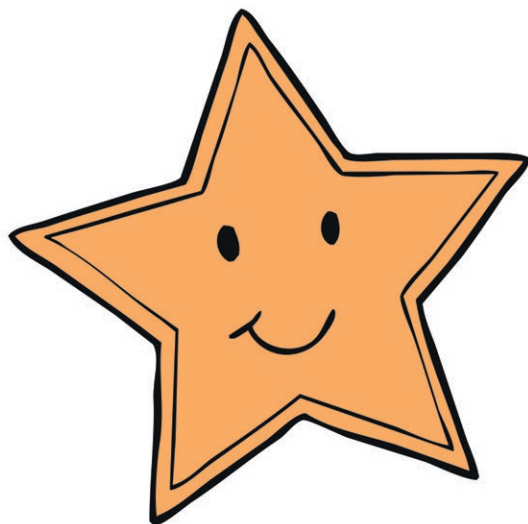
Noah could win the
skipping race **or** Barnaby
might win.

when



www.twinkl.co.uk

There are two types of **conjunction**: co-ordinating conjunctions and subordinating conjunctions. The conjunction 'when' can be used in the middle or at the beginning of a sentence to join two phrases or clauses. It is a subordinating conjunction that can make a complex sentence.



You can have a sticker
when you have tried
your best.



Cheng was happy **when**
his family surprised him.



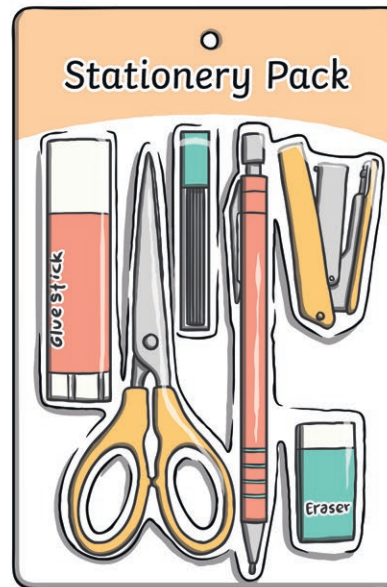
When I've finished my
vegetables, please can I
have a pudding?

that

There are two types of **conjunction**: co-ordinating conjunctions and subordinating conjunctions. The conjunction 'that' can be used in the middle or at the beginning of a sentence to join two phrases or clauses. It is a subordinating conjunction that can make a complex sentence.



Thomas knows a great game **that** he is sure you will like.



George bought a new stationery pack **that** would be very useful at school.



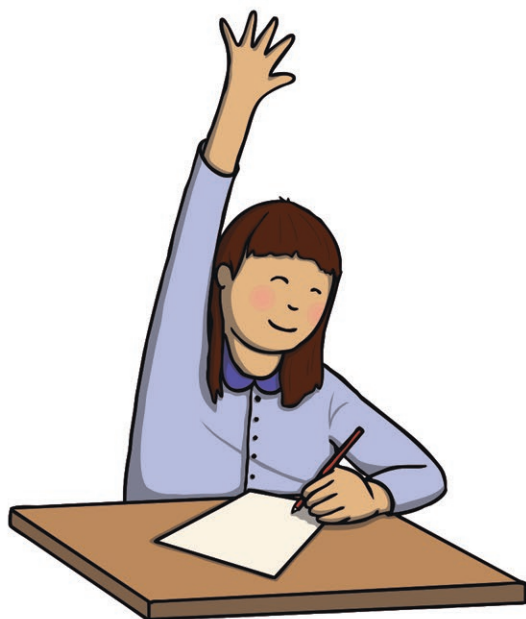
I stayed in a great hotel **that** had a fabulous swimming pool.

if

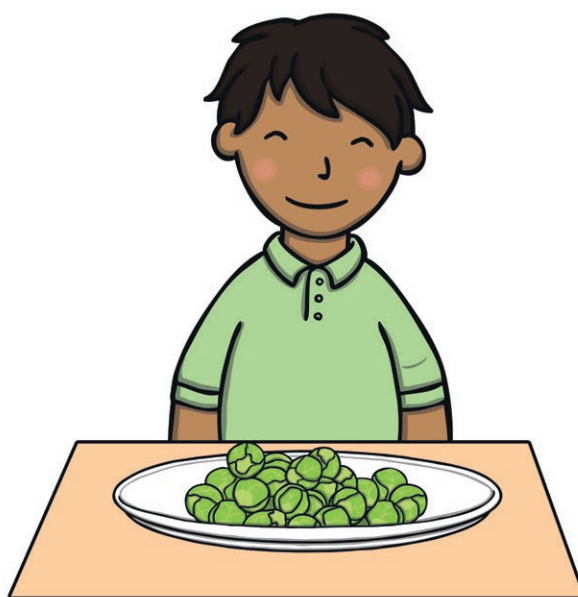


www.twinkl.co.uk

There are two types of **conjunction**: co-ordinating conjunctions and subordinating conjunctions. The conjunction 'if' can be used in the middle or at the beginning of a sentence to join two phrases or clauses. It is a subordinating conjunction that can make a complex sentence.



Put your hand up **if** you need me to help you.



The boy was allowed to have a pudding **if** he ate all his sprouts.



If you set off to school now, you will arrive on time.

because



www.twinkl.co.uk

There are two types of **conjunction**: co-ordinating conjunctions and subordinating conjunctions. The conjunction 'because' can be used in the middle or at the beginning of a sentence to join two phrases or clauses. It is a subordinating conjunction that can make a complex sentence.



We played a board game
because it was a
rainy day.



Monika doesn't drink
milk **because** she is
allergic to it.



I opened the door
because someone had
been knocking.

so

There are two types of conjunction: co-ordinating conjunctions and subordinating conjunctions.

The conjunction 'so' is used in a sentence to join or link words, phrases or clauses together. It is a co-ordinating conjunction that can make a compound sentence.



She used an umbrella **so** she wouldn't get wet.



Max had been a good dog **so** he was given a bone.



He wanted to help people **so** he became a fireman.